



L12

NTT - TECHNICAL NYLON

Load capacity up to 170kg



RIG

Made of stamped steel plate and swivel head with double ball raceway, zinc-plated finish. Bolted wheel axle.

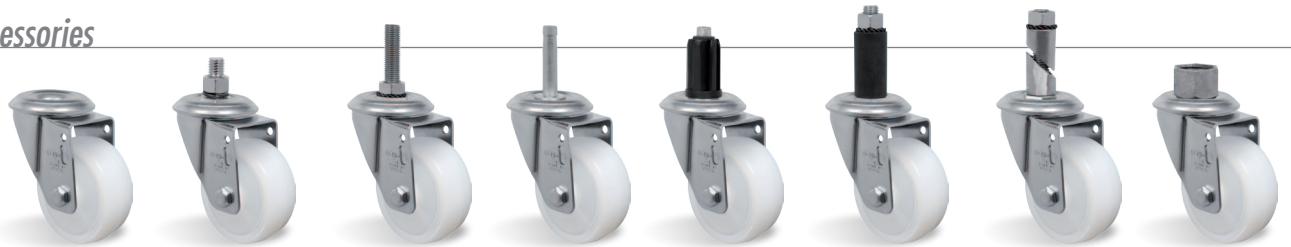
WHEEL

NTT - Technical Nylon. Hardness: 75 Shore D. (-40°C to + 110°C)
Produced with single injection high quality polyamide nylon 6.0. They are light weight, with a good mechanical resistance, roll very easily, requiring less effort in handling and maneuvering, under static loads they are resistant to deformation. Ideal for applications in wet environments, they are resistant to greases, oils, salts and some kinds of acids. Manufactured of recycled material. Nominal working speed is up to 4km/h.



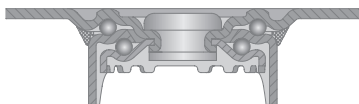
| Swivel Caster | Rigid Caster | Wheel | | | | Axle Type (bearing) | | | | | |
|---------------|--------------|------------|------|------|-------|---------------------|-----|------|----------------|-----------------|------------------|
| Reference | Reference | Reference | (mm) | (mm) | (pol) | | KG | (mm) | w/o brake (mm) | w/ brake G (mm) | w/ brake SL (mm) |
| GL 212 NTT | FL 212 NTT | R 212 NTT | 64 | 32 | 5/16" | Plain Bearing | 150 | 86 | 64 | - | 77 |
| GL 212 NTTE | FL 212 NTTE | R 212 NTTE | | | | Ball Bearing | | | | | |
| GL 312 NTT | FL 312 NTT | R 312 NTT | 75 | | | Plain Bearing | 170 | 103 | 71 | 98 | 80 |
| GL 312 NTTE | FL 312 NTTE | R 312 NTTE | | | | Ball Bearing | | | | | |
| GL 412 NTT | FL 412 NTT | R 412 NTT | 100 | | | Plain Bearing | 170 | 126 | 80 | 125 | 105 |
| GL 412 NTTE | FL 412 NTTE | R 412 NTTE | | | | Ball Bearing | | | | | |
| GL 512 NTT | FL 512 NTT | R 512 NTT | 125 | | | Plain Bearing | 170 | 156 | 105 | 125 | 105 |
| GL 512 NTTE | FL 512 NTTE | R 512 NTTE | | | | Ball Bearing | | | | | |

Fittings/Accessories

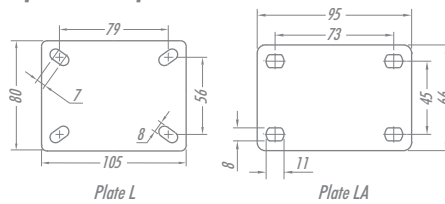


| Reference | Axle hole 13mm | Threaded Stem 1/2"NC X 25mm | Threaded Stem 1/2"NC X 64mm | Stem Ø7/16" X 50mm | Nylon Socket Fitting | Rubber Expander Fitting | Aluminum Expander Fitting | Fitting Cap's |
|-----------|----------------|-----------------------------|-----------------------------|--------------------|----------------------|-------------------------|---------------------------|-----------------|
| | LES | LE | LEX | LEL | See table below | See table below | See table below | See table below |

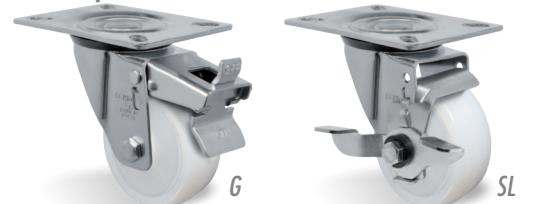
Swivel Sections



Top Plate Options



Brake Options



| NYLON SOCKET FITTING | | RUBBER EXPANDER FITTING | | ALUMINUM EXPANDER FITTING | | CAP'S N° | THREAD |
|----------------------|-----------|-------------------------|-----------|---------------------------|-----------|----------|----------|
| SIZE (mm) | REFERENCE | SIZE (mm) | REFERENCE | SIZE (mm) | REFERENCE | | |
| Ø38 | S1 | 18 - 21 | EX 1 | 21 - 27 | EA 2 | T1 | 1/2" BSP |
| Ø30 | S2 | 21 - 24 | EX 2 | 27 - 33 | EA 4 | T2 | 3/4" BSP |
| Ø25 | S3 | 25 - 28 | EX 3 | | | T3 | 1" BSP |
| 40X40 | S4 | 27 - 30 | EX 4 | | | | |
| | | 37 - 40 | EX 5 | | | | |