

L16

SP - SOFT RUBBER

Load capacity up to 170kg

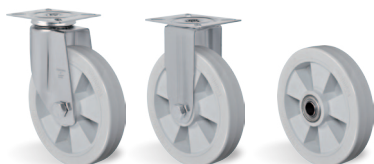
RIG









Made of stamped steel plate and swivel head with double ball raceway, zinc-plated finish. Bolted wheel axle.



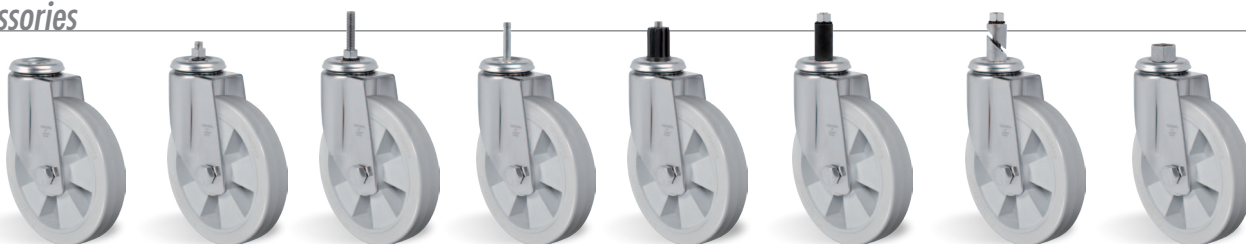
WHEEL

SP - Extra Soft Thermoplastic Rubber. Hardness: 65 Shore A. (-10°C to +50°C)
 Injected recyclable thermoplastic extra soft rubber tread and polypropylene copolymer wheel center. Its advantages are the extremely low noise level and vibration reduction. Indicated for light load handling, they offer an excellent floor protection and regular resistance to impacts and chemicals. Nominal working speed is up to 4km/h.



| Swivel Caster | Rigid Caster | Wheel |  |  |  | Axle Type (bearing) |  |  |  |  |  |
|---------------|--------------|------------|---|---|---|---------------------|--|---|---|---|---|
| Reference | Reference | Reference | (mm) | (mm) | (pol) | | KG | (mm) | w/o brake (mm) | w/ brake G (mm) | w/ brake S (mm) |
| GL 816 SPN | FL 816 SPN | R 816 SPN | 200 | 41 | 5/8" | Nylon Socket | 150 | 241 | 155 | 155 | - |
| GL 816 SPE | FL 816 SPE | R 816 SPE | | | | Ball Bearing | | | | | - |
| GL 916 SPN | FL 916 SPN | R 916 SPN | 225 | | | Nylon Socket | 160 | 280 | 180 | - | 180 |
| GL 916 SPE | FL 916 SPE | R 916 SPE | | | | Ball Bearing | | | | | |
| GL 1016 SPN | FL 1016 SPN | R 1016 SPN | 250 | | | Nylon Socket | 170 | 294 | 193 | - | 193 |
| GL 1016 SPE | FL 1016 SPE | R 1016 SPE | | | | Ball Bearing | | | | | |

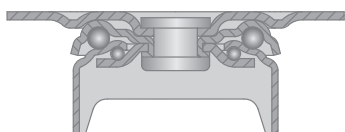
Fittings/Accessories



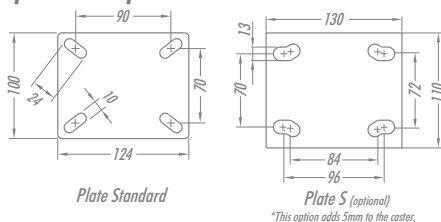
| | Axle hole 16mm | Threaded Stem 1/2"NC x 25mm | Threaded Stem 1/2"NC x 64mm | Stem Ø7/16" X 50mm | Nylon Socket Fitting | Rubber Expander Fitting | Aluminum Expander Fitting | Fitting Cap's |
|-----------|-------------------|--------------------------------|--------------------------------|-----------------------|-------------------------|----------------------------|------------------------------|-----------------|
| Reference | LES | LE | LEX | LEL | See table below | See table below | See table below | See table below |

Note: Stem casters overall heights are 3mm less than indicated on table.

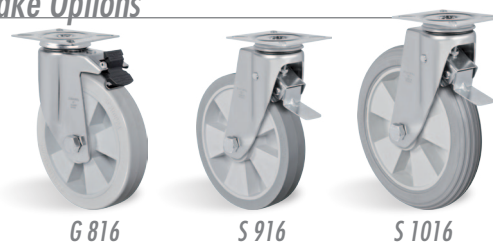
Swivel Sections


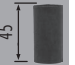



Top Plate Options



Brake Options



| NYLON SOCKET FITTING  | | RUBBER EXPANDER FITTING  | | ALUMINUM EXPANDER FITTING  | | CAP'S N° | THREAD |
|--|-----------|---|-----------|---|-----------|----------|----------|
| SIZE (mm) | REFERENCE | SIZE (mm) | REFERENCE | SIZE (mm) | REFERENCE | | |
| Ø38 | S1 | 18 - 21 | EX 1 | 21 - 27 | EA 2 | T1 | 1/2" BSP |
| Ø30 | S2 | 21 - 24 | EX 2 | 27 - 33 | EA 4 | T2 | 3/4" BSP |
| Ø25 | S3 | 25 - 28 | EX 3 | | | T3 | 1" BSP |
| 40X40 | S4 | 27 - 30 | EX 4 | | | | |
| | | 37 - 40 | EX 5 | | | | |