

# MX - Axial Medium

BP - PVC









Load capacity up to 400kg

**RIG** Made of steel with a painted finish and swivel section with two axial ball bearings. Bolted wheel axle



## WHEEL

BP - Thermoplastic Compound with PVC. Hardness: 80 Shore A. (-10°C to + 50°C)  
Produced with recyclable thermoplastic compound with PVC tread and polypropylene copolymer wheel center. They offer a soft and quiet rolling, great floor protection, good chemical, wear and impact resistance, resulting in an excellent cost-benefit ratio. Nominal working speed is up to 4km/h.

Swivel Caster	Rigid Caster	Wheel				Axle Type (bearing)					
Reference	Reference	Reference	(mm)	(mm)	(pol)		KG	(mm)	w/o brake (mm)	w/ brake FP (mm)	w/ brake GB (mm)
GMX 42 BPN	FMX 42 BPN	R 42 BPN	100	50	1/2"	Nylon Socket	150	155	84	143	-
GMX 42 BPR	FMX 42 BPR	R 42 BPR				Roller Bearing					
GMX 42 BPE	FMX 42 BPE	R 42 BPE				Ball Bearing					
GMX 52 BPN	FMX 52 BPN	R 52 BPN	125			Nylon Socket	200	183	107	155	183
GMX 52 BPR	FMX 52 BPR	R 52 BPR				Roller Bearing					
GMX 52 BPE	FMX 52 BPE	R 52 BPE				Ball Bearing					
GMX 62 BPN	FMX 62 BPN	R 62 BPN	150			Nylon Socket	250	205	123	170	200
GMX 62 BPR	FMX 62 BPR	R 62 BPR				Roller Bearing					
GMX 62 BPE	FMX 62 BPE	R 62 BPE				Ball Bearing					
GMX 82 BPN	FMX 82 BPN	R 82 BPN	200			Nylon Socket	300	251	158	193	-
GMX 82 BPE	FMX 82 BPE	R 82 BPE				Ball Bearing					
GMX 102 BPN	FMX 102 BPN	R 102 BPN	250			Nylon Socket	400	306	197	255	-
GMX 102 BPE	FMX 102 BPE	R 102 BPE		Ball Bearing							

## Accessories



FL - Side Brake

FLD - Side Brake Duplo

GB - Pedal Brake  
\*Available only for 52 and 62

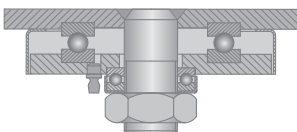
FP - Pedal Brake

AH - Central Brake  
Consult the swivel height for this type of brake

BG - Swivel Lock

GC - Caster Guard

## Swivel Sections



## Top Plate Options

