

MX - Axial Medium

TB - THERMOPLASTIC RUBBER









Load capacity up to 400kg

RIG Made of steel with a painted finish and swivel section with two axial ball bearings. Bolted wheel axle



WHEEL

TB - Thermoplastic Rubber. Hardness: 80 Shore A. (-20°C to +70°C)
Produced with recyclable thermoplastic elastic rubber tread and polypropylene copolymer wheel center. They present an excellent floor protection, soft and quiet rolling, easiness to handling and maneuvering, impact resistance, have a low deformation index under load and excellent abrasion resistance. They have a good resistance to weathering and chemicals such as salts and greases. Nominal working speed is up to 4km/h.

Swivel Caster	Rigid Caster	Wheel				Axle Type (bearing)					
Reference	Reference	Reference	(mm)	(mm)	(pol)		KG	(mm)	w/o brake (mm)	w/ brake FP (mm)	w/ brake GB (mm)
GMX 42 TBN	FMX 42 TBN	R 42 TBN	100	50	1/2"	Nylon Socket	150	155	84	143	-
GMX 42 TBR	FMX 42 TBR	R 42 TBR				Roller Bearing					
GMX 42 TBE	FMX 42 TBE	R 42 TBE				Ball Bearing					
GMX 52 TBN	FMX 52 TBN	R 52 TBN	125			Nylon Socket	200	183	107	155	183
GMX 52 TBR	FMX 52 TBR	R 52 TBR				Roller Bearing					
GMX 52 TBE	FMX 52 TBE	R 52 TBE				Ball Bearing					
GMX 62 TBN	FMX 62 TBN	R 62 TBN	150			Nylon Socket	250	205	123	170	200
GMX 62 TBR	FMX 62 TBR	R 62 TBR				Roller Bearing					
GMX 62 TBE	FMX 62 TBE	R 62 TBE				Ball Bearing					
GMX 82 TBN	FMX 82 TBN	R 82 TBN	200			Nylon Socket	300	251	158	193	-
GMX 82 TBE	FMX 82 TBE	R 82 TBE				Ball Bearing					
GMX 102 TBN	FMX 102 TBN	R 102 TBN	250			Nylon Socket	400	306	197	225	-
GMX 102 TBE	FMX 102 TBE	R 102 TBE				Ball Bearing					

Accessories



FL - Side Brake

FLD - Side Brake Duplo

GB - Pedal Brake
*Available only for 52 and 62

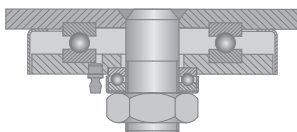
FP - Pedal Brake

AH - Central Brake
Consult the swivel height for this type of brake

BG - Swivel Lock

GC - Caster Guard

Swivel Sections



Top Plate Options

