

# MX - Axial Medium

## TP - THERMOPLASTIC COMPOUND









Load capacity up to 400kg

**RIG** Made of steel with a painted finish and swivel section with two axial ball bearings. Bolted wheel axle



### WHEEL

TP - Thermoplastic Compound. Hardness: 80 Shore A. (-10°C to + 50°C)  
Produced with recyclable thermoplastic compound tread and polypropylene copolymer wheel center. They offer a soft and quiet rolling, excellent floor protection, good chemical, wear and impact resistance, resulting in an excellent cost-benefit ratio. Nominal working speed is up to 4km/h.

Swivel Caster	Rigid Caster	Wheel				Axle Type (bearing)					
Reference	Reference	Reference	(mm)	(mm)	(pol)		KG	(mm)	w/o brake (mm)	w/ brake FP (mm)	w/ brake GB (mm)
GMX 42 TPN	FMX 42 TPN	R 42 TPN	100	50	1/2"	Nylon Socket	150	155	84	143	-
GMX 42 TPR	FMX 42 TPR	R 42 TPR				Roller Bearing					
GMX 42 TPE	FMX 42 TPE	R 42 TPE				Ball Bearing					
GMX 52 TPN	FMX 52 TPN	R 52 TPN	125			Nylon Socket	200	183	107	155	183
GMX 52 TPR	FMX 52 TPR	R 52 TPR				Roller Bearing					
GMX 52 TPE	FMX 52 TPE	R 52 TPE				Ball Bearing					
GMX 62 TPN	FMX 62 TPN	R 62 TPN	150			Nylon Socket	250	205	123	170	200
GMX 62 TPR	FMX 62 TPR	R 62 TPR				Roller Bearing					
GMX 62 TPE	FMX 62 TPE	R 62 TPE				Ball Bearing					
GMX 82 TPN	FMX 82 TPN	R 82 TPN	200			Nylon Socket	300	251	158	193	-
GMX 82 TPE	FMX 82 TPE	R 82 TPE				Ball Bearing					
GMX 102 TPN	FMX 102 TPN	R 102 TPN	250			Nylon Socket	400	306	197	225	-
GMX 102 TPE	FMX 102 TPE	R 102 TPE		Ball Bearing							

## Accessories



FL - Side Brake

FLD - Side Brake Duplo

GB - Pedal Brake  
*\*Available only for 52 and 62*

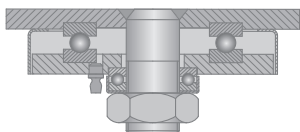
FP - Pedal Brake

AH - Central Brake  
*Consult the swivel height for this type of brake*

BG - Swivel Lock

GC - Caster Guard

## Swivel Sections



## Top Plate Options

