

MX - Axial Medium

NT - TECHNICAL NYLON









Load capacity up to 900kg

RIG Made of steel with a painted finish and swivel section with two axial ball bearings. Bolted wheel axle



WHEEL

NT - Technical Nylon. Hardness: 75 Shore D. (-40°C to + 110°C)
Produced with high quality nylon 6.0 tread and wheel center. They are light and have an excellent mechanical resistance, roll very easily, requiring less effort in maneuvering and handling. Ideal for applications in wet environments, they are resistant to greases, oils, salts and some kinds of acids. Manufactured of recycled material. Nominal working speed is up to 4km/h.

Swivel Caster	Rigid Caster	Wheel				Axle Type (bearing)					
Reference	Reference	Reference	(mm)	(mm)	(pol)		KG	(mm)	w/o brake (mm)	w/ brake FP (mm)	w/ brake GB (mm)
GMX 42 NTN	FMX 42 NTN	R 42 NTN	100	50	1/2"	Nylon Socket	400	155	84	143	-
GMX 42 NTR	FMX 42 NTR	R 42 NTR				Roller Bearing					
GMX 42 NTE	FMX 42 NTE	R 42 NTE				Ball Bearing					
GMX 52 NTN	FMX 52 NTN	R 52 NTN	125	50	1/2"	Nylon Socket	500	183	107	155	183
GMX 52 NTR	FMX 52 NTR	R 52 NTR				Roller Bearing					
GMX 52 NTE	FMX 52 NTE	R 52 NTE				Ball Bearing					
GMX 62 NTN	FMX 62 NTN	R 62 NTN	150	50	1/2"	Nylon Socket	600	205	123	170	200
GMX 62 NTR	FMX 62 NTR	R 62 NTR				Roller Bearing					
GMX 62 NTE	FMX 62 NTE	R 62 NTE				Ball Bearing					
GMX 82 NTN	FMX 82 NTN	R 82 NTN	200	50	1/2"	Nylon Socket	800	251	158	193	-
GMX 82 NTE	FMX 82 NTE	R 82 NTE				Ball Bearing					
GMX 102 NTN	FMX 102 NTN	R 102 NTN	250	50	1/2"	Nylon Socket	900	306	197	255	-
GMX 102 NTE	FMX 102 NTE	R 102 NTE				Ball Bearing					

Accessories



FL - Side Brake

FLD - Side Brake Duplo

GB - Pedal Brake
*Available only for 52 and 62

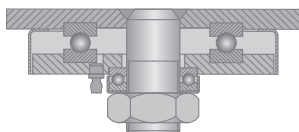
FP - Pedal Brake

AH - Central Brake
Consult the swivel height for this type of brake

BG - Swivel Lock

GC - Caster Guard

Swivel Sections



Top Plate Options

