

MX - Axial Medium

UP - THERMOPLASTIC POLYURETHANE









Load capacity up to 700kg

RIG Made of steel with a painted finish and swivel section with two axial ball bearings. Bolted wheel axle



WHEEL

UP - Thermoplastic Polyurethane. Hardness: 90 Shore A. (-20°C to + 70°C)
Produced with recyclable thermoplastic elastollan polyurethane tread and polypropylene copolymer wheel center. Ideal for those who look for an excellent load capacity added to great floor protection with low noise rolling, offering an excellent resistance to abrasion and impacts. Resistant to greases, mineral oils and some acids. Nominal working speed is up to 4km/h.

Swivel Caster	Rigid Caster	Wheel				Axle Type (bearing)					
Reference	Reference	Reference	(mm)	(mm)	(pol)		KG	(mm)	w/o brake (mm)	w/ brake FP (mm)	w/ brake GB (mm)
GMX 42 UPN	FMX 42 UPN	R 42 UPN	100	50	1/2"	Nylon Socket	250	155	84	143	-
GMX 42 UPR	FMX 42 UPR	R 42 UPR				Roller Bearing					
GMX 42 UPE	FMX 42 UPE	R 42 UPE				Ball Bearing					
GMX 52 UPN	FMX 52 UPN	R 52 UPN	125			Nylon Socket	350	183	107	155	183
GMX 52 UPR	FMX 52 UPR	R 52 UPR				Roller Bearing					
GMX 52 UPE	FMX 52 UPE	R 52 UPE				Ball Bearing					
GMX 62 UPN	FMX 62 UPN	R 62 UPN	150			Nylon Socket	400	205	123	170	200
GMX 62 UPR	FMX 62 UPR	R 62 UPR				Roller Bearing					
GMX 62 UPE	FMX 62 UPE	R 62 UPE				Ball Bearing					
GMX 82 UPN	FMX 82 UPN	R 82 UPN	200			Ball Bearing	550	251	158	193	-
GMX 82 UPE	FMX 82 UPE	R 82 UPE				Nylon Socket					
GMX 102 UPN	FMX 102 UPN	R 102 UPN	250			Ball Bearing	700	306	197	225	-
GMX 102 UPE	FMX 102 UPE	R 102 UPE		Nylon Socket							

Accessories



FL - Side Brake

FLD - Side Brake Duplo

GB - Pedal Brake
**Available only for 52 and 62*

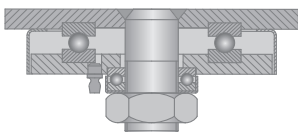
FP - Pedal Brake

AH - Central Brake
Consult the swivel height for this type of brake

BG - Swivel Lock

GC - Caster Guard

Swivel Sections



Top Plate Options

