

MX - Axial Medium

AC - MOLDED POLYURETHANE









Load capacity up to 700kg

RIG Made of steel with a painted finish and swivel section with two axial ball bearings. Bolted wheel axle



WHEEL

AC - Moulded High Hardness Polyurethane - Round. Hardness: 60 Shore D. (-40°C to +80°C)
Produced with a high hardness molded green polyurethane tread over a grey cast iron wheel center. Round tread profile offers a reduced floor contact area, easiness for handling and maneuvering, reducing handling effort and low rolling noise level. They offer a superior service life due to their polyurethane layer larger than conventional wheels. They have an excellent resistance to abrasion, impacts, weathering and chemicals such as greases, oils, salts and solvents. Nominal working speed is up to 20km/h.

Swivel Caster	Rigid Caster	Wheel				Axle Type (bearing)					
Reference	Reference	Reference	(mm)	(mm)	(pol)		KG	(mm)	w/o brake (mm)	w/ brake FP (mm)	w/ brake GB (mm)
GMX 42 ACE	FMX 42 ACE	R 42 ACE	100	50	1/2"	Ball Bearing	400	155	84	143	-
GMX 52 ACE	FMX 52 ACE	R 52 ACE	125			Roller Bearing	450	183	107	155	183
GMX 62 ACE	FMX 62 ACE	R 62 ACE	150			Ball Bearing	550	205	123	170	200
GMX 82 ACE	FMX 82 ACE	R 82 ACE	200			Ball Bearing	650	251	158	193	-
GMX 102 ACE	FMX 102 ACE	R 102 ACE	250			Ball Bearing	700	306	197	225	-

Accessories



FL - Side Brake

FLD - Side Brake Duplo

GB - Pedal Brake
*Available only for 52 and 62

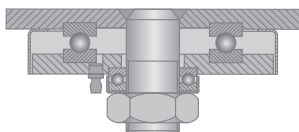
FP - Pedal Brake

AH - Central Brake
Consult the swivel height for this type of brake

BG - Swivel Lock

GC - Caster Guard

Swivel Sections



Top Plate Options

