



# MX - Axial Medium

## BS - MOLDED DOUBLE RUBBER AZUL









Load capacity up to 500kg

**RIG** Made of steel with a painted finish and swivel section with two axial ball bearings. Bolted wheel axle



### WHEEL

BS - Double-Layered Molded Rubber Blue. Hardness: 80 Shore A. (-20°C to + 70°C)  
Produced with molded double-layered vulcanized rubber tread over a grey cast iron wheel center. Ideal for external floor applications, offer a great shock and vibration absorption, high resistance to abrasion and longer service life due to their thicker rubber layer. Resistant to chemicals. They can be used at a speed of up to 20km/h when mounted with ball bearings.

Swivel Caster	Rigid Caster	Wheel				Axle Type (bearing)					
Reference	Reference	Reference	(mm)	(mm)	(pol)		KG	(mm)	w/o brake (mm)	w/ brake FP (mm)	w/ brake GB (mm)
GMX 52 BSE AZUL	FMX 52 BSE AZUL	R 52 BSE AZUL	125	50	1/2"	Ball Bearing	300	183	107	155	183
GMX 62 BSE AZUL	FMX 62 BSE AZUL	R 62 BSE AZUL	150					205	123	170	200
GMX 82 BSE AZUL	FMX 82 BSE AZUL	R 82 BSE AZUL	200					251	158	193	-
GMX 102 BSE AZUL	FMX 102 BSE AZUL	R 102 BSE AZUL	250					306	197	225	-

### Accessories



FL - Side Brake

FLD - Side Brake Duplo

GB - Pedal Brake  
\*Available only for 52 and 62

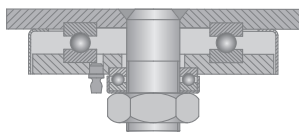
FP - Pedal Brake

AH - Central Brake  
Consult the swivel height for this type of brake

BG - Swivel Lock

GC - Caster Guard

### Swivel Sections



### Top Plate Options

