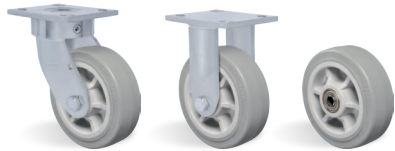
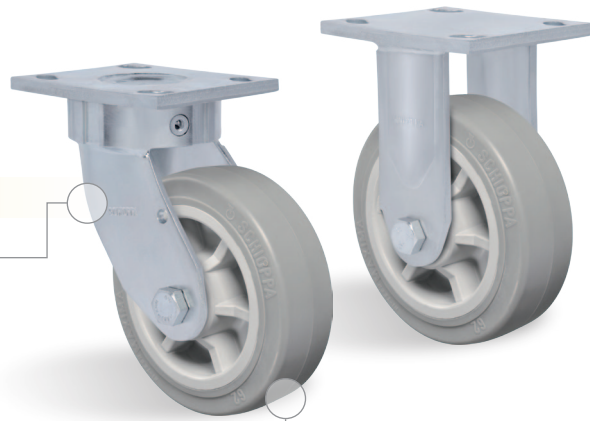


# ERGONOMIC

## SP - SOFT RUBBER








**Load capacity up to 400kg**

**RIG** Reinforced without central pin, with single hardened and guarded ball raceway. Bolted wheel axle.

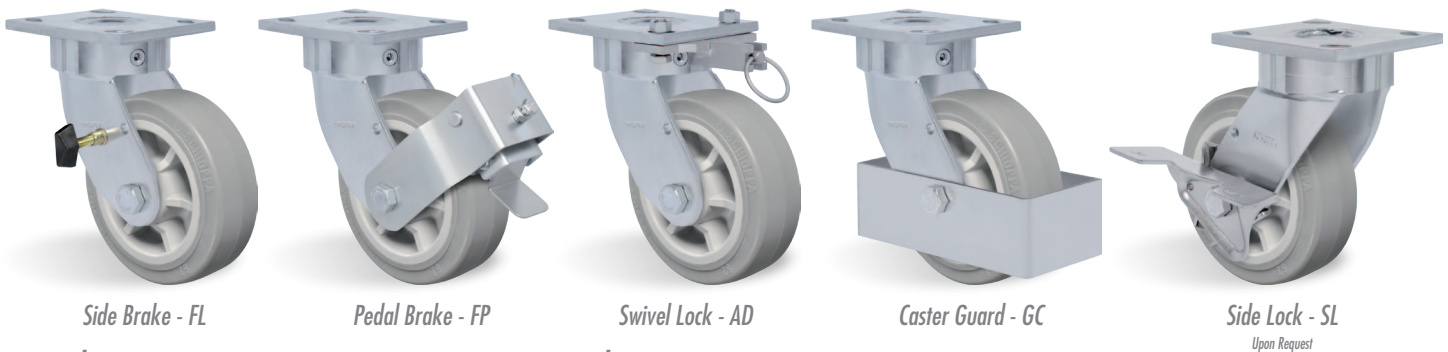


### WHEEL

SP - Extra Soft Thermoplastic Rubber. Hardness: 65 Shore A. (-10°C to +50°C)  
 Injected recyclable thermoplastic extra soft rubber tread and polypropylene copolymer wheel center. Its advantages are the extremely low noise level and vibration reduction. Indicated for light load handling, they offer an excellent floor protection and regular resistance to impacts and chemicals. Nominal working speed is up to 4km/h.

| Swivel Caster | Rigid Caster | Wheel     |  |  |  | Axle Type (bearing) |  |  |  |  |
|---------------|--------------|-----------|---|---|---|---------------------|---|---|---|---|
| Reference     | Reference    | Reference | (mm)  | (mm)  | (pol)   |                     | KG  | (mm)  | w/o brake (mm)  | w/ brake FP (mm)  |
| GKSR 42 SPN   | FKSR 42 SPN  | R 42 SPN  | 100   | 50  | 1/2"  | Nylon Socket        | 150   | 143   | 75  | 135   |
| GKSR 42 SPR   | FKSR 42 SPR  | R 42 SPR  |   |   |   | Roller Bearing      |   |   |   |   |
| GKSR 42 SPE   | FKSR 42 SPE  | R 42 SPE  |   |   |   | Ball Bearing        |   |   |   |   |
| GKSR 52 SPN   | FKSR 52 SPN  | R 52 SPN  | 125   |   |   | Nylon Socket        | 200   | 165   | 92  | 140   |
| GKSR 52 SPR   | FKSR 52 SPR  | R 52 SPR  |   |   |   | Roller Bearing      |   |   |   |   |
| GKSR 52 SPE   | FKSR 52 SPE  | R 52 SPE  |   |   |   | Ball Bearing        |   |   |   |   |
| GKSR 62 SPN   | FKSR 62 SPN  | R 62 SPN  | 150   |   |   | Nylon Socket        | 250   | 190   | 132   | 180   |
| GKSR 62 SPR   | FKSR 62 SPR  | R 62 SPR  |   |   |   | Roller Bearing      |   |   |   |   |
| GKSR 62 SPE   | FKSR 62 SPE  | R 62 SPE  |   |   |   | Ball Bearing        |   |   |   |   |
| GKSR 82 SPN   | FKSR 82 SPN  | R 82 SPN  | 200   |   |   | Nylon Socket        | 300   | 241   | 173   | 210   |
| GKSR 82 SPR   | FKSR 82 SPR  | R 82 SPR  |   |   |   | Roller Bearing      |   |   |   |   |
| GKSR 82 SPE   | FKSR 82 SPE  | R 82 SPE  |   |   |   | Ball Bearing        |   |   |   |   |
| GKSR 102 SPN  | FKSR 102 SPN | R 102 SPN | 250   | Nylon Socket  | 400   | 290                 | 211   | 240   |   |   |
| GKSR 102 SPE  | FKSR 102 SPE | R 102 SPE |   | Ball Bearing  |   |                     |   |   |   |   |

### Accessories/Brake Options



Side Brake - FL

Pedal Brake - FP

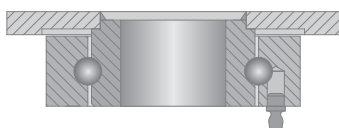
Swivel Lock - AD

Caster Guard - GC

Side Lock - SL

Upon Request

### Swivel Sections



### Top Plate Options

