



ERGONOMIC

TB - THERMOPLASTIC RUBBER








Load capacity up to 400kg

RIG Reinforced without central pin, with single hardened and guarded ball raceway. Bolted wheel axle.



WHEEL

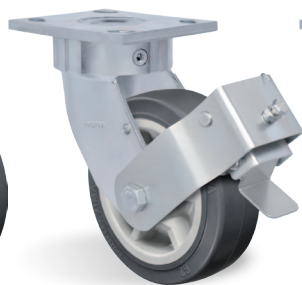
TB - Thermoplastic Rubber. Hardness: 80 Shore A. (-20°C to + 70°C)
 Produced with recyclable thermoplastic elastic rubber tread and polypropylene copolymer wheel center. They present an excellent floor protection, soft and quiet rolling, easiness to handling and maneuvering, impact resistance, have a low deformation index under load and excellent abrasion resistance. They have a good resistance to weathering and chemicals such as salts and greases. Nominal working speed is up to 4km/h.

Swivel Caster	Rigid Caster	Wheel	 (mm)	 (mm)	 (pol)	Axle Type (bearing)	 KG	 (mm)	 w/o brake (mm)	 w/ brake FP (mm)
Reference	Reference	Reference								
GKSR 42 TBN	FKSR 42 TBN	R 42 TBN	100	50	1/2"	Nylon Socket	150	143	75	135
GKSR 42 TBR	FKSR 42 TBR	R 42 TBR				Roller Bearing				
GKSR 42 TBE	FKSR 42 TBE	R 42 TBE				Ball Bearing				
GKSR 52 TBN	FKSR 52 TBN	R 52 TBN	125			Nylon Socket	200	165	92	140
GKSR 52 TBR	FKSR 52 TBR	R 52 TBR				Roller Bearing				
GKSR 52 TBE	FKSR 52 TBE	R 52 TBE				Ball Bearing				
GKSR 62 TBN	FKSR 62 TBN	R 62 TBN	150			Nylon Socket	250	190	132	180
GKSR 62 TBR	FKSR 62 TBR	R 62 TBR				Roller Bearing				
GKSR 62 TBE	FKSR 62 TBE	R 62 TBE				Ball Bearing				
GKSR 82 TBN	FKSR 82 TBN	R 82 TBN	200			Nylon Socket	300	241	173	210
GKSR 82 TBE	FKSR 82 TBE	R 82 TBE				Ball Bearing				
GKSR 102 TBN	FKSR 102 TBN	R 102 TBN	250			Nylon Socket	400	290	211	240
GKSR 102 TBE	FKSR 102 TBE	R 102 TBE		Ball Bearing						

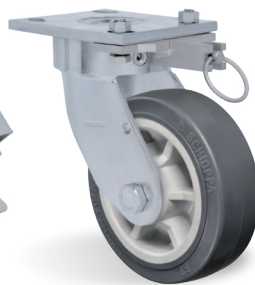
Accessories/Brake Options



Side Brake - FL



Pedal Brake - FP



Swivel Lock - AD

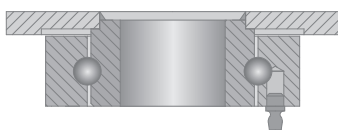


Caster Guard - GC



Side Lock - SL
 Upon Request

Swivel Sections



Top Plate Options

