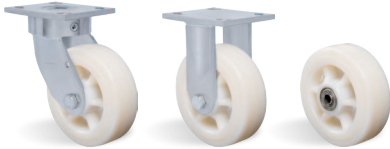




ERGONOMIC NT - TECHNICAL NYLON








Load capacity up to 900kg

RIG Reinforced without central pin, with single hardened and guarded ball raceway. Bolted wheel axle.

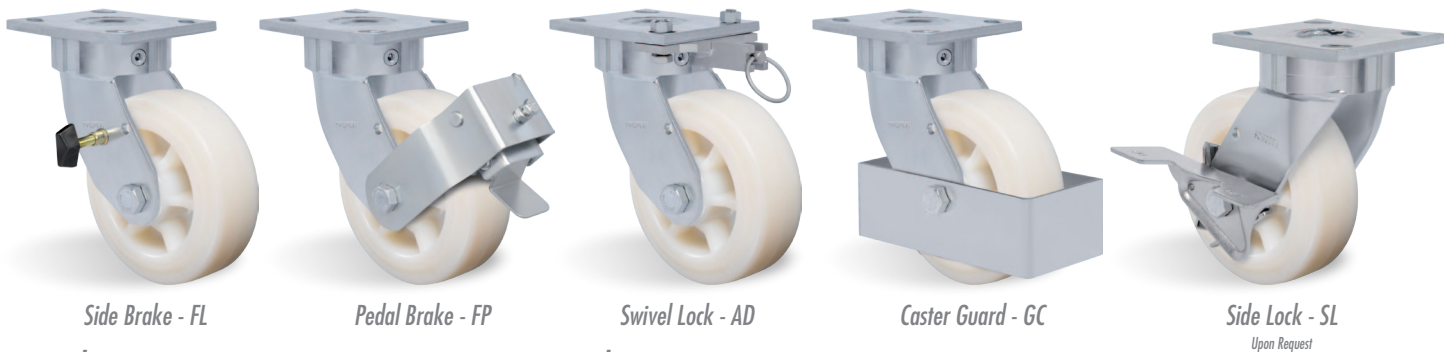


WHEEL

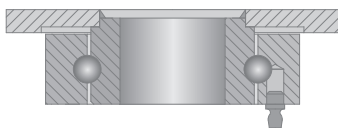
NT - Technical Nylon. Hardness: 75 Shore D. (-40°C to + 110°C)
Produced with high quality nylon 6.0 tread and wheel center. They are light and have an excellent mechanical resistance, roll very easily, requiring less effort in maneuvering and handling. Ideal for applications in wet environments, they are resistant to greases, oils, salts and some kinds of acids. Manufactured of recycled material. Nominal working speed is up to 4km/h.

Swivel Caster	Rigid Caster	Wheel				Axle Type (bearing)				
Reference	Reference	Reference	(mm)	(mm)	(pol)		KG	(mm)	w/o brake (mm)	w/ brake FP (mm)
GKSR 42 NTN	FKSR 42 NTN	R 42 NTN	100	50	1/2"	Nylon Socket	400	143	75	135
GKSR 42 NTR	FKSR 42 NTR	R 42 NTR				Roller Bearing				
GKSR 42 NTE	FKSR 42 NTE	R 42 NTE				Ball Bearing				
GKSR 52 NTN	FKSR 52 NTN	R 52 NTN	125			Nylon Socket	500	165	92	140
GKSR 52 NTR	FKSR 52 NTR	R 52 NTR				Roller Bearing				
GKSR 52 NTE	FKSR 52 NTE	R 52 NTE				Ball Bearing				
GKSR 62 NTN	FKSR 62 NTN	R 62 NTN	150			Nylon Socket	600	190	132	180
GKSR 62 NTR	FKSR 62 NTR	R 62 NTR				Roller Bearing				
GKSR 62 NTE	FKSR 62 NTE	R 62 NTE				Ball Bearing				
GKSR 82 NTN	FKSR 82 NTN	R 82 NTN	200			Nylon Socket	700	241	173	210
GKSR 82 NTR	FKSR 82 NTR	R 82 NTR				Roller Bearing				
GKSR 82 NTE	FKSR 82 NTE	R 82 NTE				Ball Bearing				
GKSR 102 NTN	FKSR 102 NTN	R 102 NTN	250	Nylon Socket	900	290	211	240		
GKSR 102 NTE	FKSR 102 NTE	R 102 NTE		Ball Bearing						

Accessories/Brake Options



Swivel Sections



Top Plate Options

