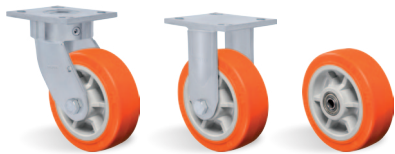


# ERGONOMIC UP - THERMOPLASTIC POLYURETHANE








Load capacity up to 700kg

**RIG** Reinforced without central pin, with single hardened and guarded ball raceway. Bolted wheel axle.

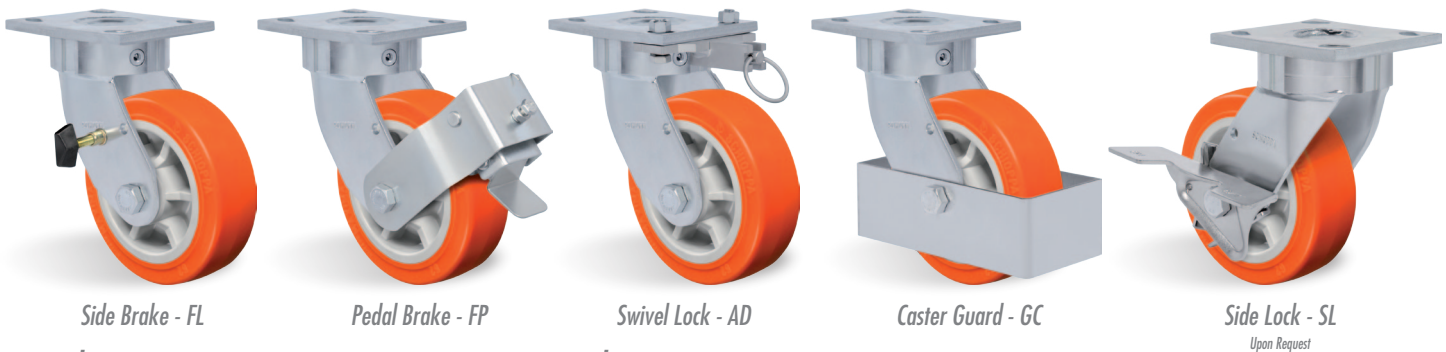


## WHEEL

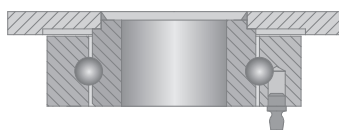
UP - Thermoplastic Polyurethane. Hardness: 90 Shore A. (-20°C to +70°C)  
Produced with recyclable thermoplastic elastollan polyurethane tread and polypropylene copolymer wheel center. Ideal for those who look for an excellent load capacity added to great floor protection with low noise rolling, offering an excellent resistance to abrasion and impacts. Resistant to greases, mineral oils and some acids. Nominal working speed is up to 4km/h.

Swivel Caster	Rigid Caster	Wheel				Axle Type (bearing)				
Reference	Reference	Reference	(mm)	(mm)	(pol)		KG	(mm)	w/o brake (mm)	w/ brake FP (mm)
GKSR 42 UPN	FKSR 42 UPN	R 42 UPN	100	50	1/2"	Nylon Socket	250	143	75	135
GKSR 42 UPR	FKSR 42 UPR	R 42 UPR				Roller Bearing				
GKSR 42 UPE	FKSR 42 UPE	R 42 UPE				Ball Bearing				
GKSR 52 UPN	FKSR 52 UPN	R 52 UPN	125			Nylon Socket	350	165	92	140
GKSR 52 UPR	FKSR 52 UPR	R 52 UPR				Roller Bearing				
GKSR 52 UPE	FKSR 52 UPE	R 52 UPE				Ball Bearing				
GKSR 62 UPN	FKSR 62 UPN	R 62 UPN	150			Nylon Socket	400	190	132	190
GKSR 62 UPR	FKSR 62 UPR	R 62 UPR				Roller Bearing				
GKSR 62 UPE	FKSR 62 UPE	R 62 UPE				Ball Bearing				
GKSR 82 UPN	FKSR 82 UPN	R 82 UPN	200			Nylon Socket	550	241	173	210
GKSR 82 UPE	FKSR 82 UPE	R 82 UPE				Ball Bearing				
GKSR 102 UPN	FKSR 102 UPN	R 102 UPN	250			Nylon Socket	700	290	211	240
GKSR 102 UPE	FKSR 102 UPE	R 102 UPE		Ball Bearing						

## Accessories/Brake Options



## Swivel Sections



## Top Plate Options

