

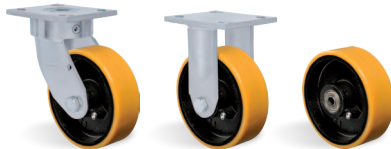


ERGONOMIC

P - MOLDED POLYURETHANE

Load capacity up to 900kg

RIG Reinforced without central pin, with single hardened and guarded ball raceway. Bolted wheel axle.



WHEEL

P - Molded Polyurethane. Hardness: 90 Shore A. (-40°C to + 80°C)
Produced with a molded polyurethane tread and grey cast iron wheel center. Ideal for applications on various surface and environment types. They withstand high loads, protect the floor, require less effort to handle, produce low noise level during handling, and have an excellent service life. They have great resistance to abrasion, impacts, weathering and chemicals such as greases, oils, salts and solvents. They can be used at a speed of up to 20km/h when mounted with ball bearings.

Swivel Caster	Rigid Caster	Wheel				Axle Type (bearing)				
Reference	Reference	Reference	(mm)	(mm)	(pol)		KG	(mm)	w/o brake (mm)	w/ brake FP (mm)
GKSR 42 PR	FKSR 42 PR	R 42 PR	100	50	1/2"	Roller Bearing	500	143	75	135
GKSR 42 PE	FKSR 42 PE	R 42 PE				Ball Bearing				
GKSR 52 PR	FKSR 52 PR	R 52 PR	125			Roller Bearing	600	165	92	140
GKSR 52 PE	FKSR 52 PE	R 52 PE				Ball Bearing				
GKSR 62 PR	FKSR 62 PR	R 62 PR	150			Roller Bearing	700	190	132	180
GKSR 62 PE	FKSR 62 PE	R 62 PE				Ball Bearing				
GKSR 82 PR	FKSR 82 PR	R 82 PR	200			Roller Bearing	900	241	173	210
GKSR 82 PE	FKSR 82 PE	R 82 PE				Ball Bearing				
GKSR 102 PR	FKSR 102 PR	R 102 PR	250			Roller Bearing	900	290	211	240
GKSR 102 PE	FKSR 102 PE	R 102 PE				Ball Bearing				
GKSR 122 PR	FKSR 122 PR	R 122 PR	300			Roller Bearing	900	343	254	-
GKSR 122 PE	FKSR 122 PE	R 122 PE				Ball Bearing				

Accessories/Brake Options



Side Brake - FL



Pedal Brake - FP

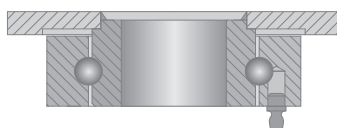


Swivel Lock - AD



Caster Guard - GC

Swivel Sections



Top Plate Options

