



ERGONOMIC ME - MOLDED POLYURETHANE

Load capacity up to 800kg








RIG Reinforced without central pin, with single hardened and guarded ball raceway. Bolted wheel axle.



WHEEL

ME - Double tread Molded Polyurethane - Round. Hardness: side 60 Shore D and center 90 Shore A. (-40°C a +80°C)
Produced with a double tread molded polyurethane, with green colored high hardness cheeks and softer orange colored polyurethane center, over a grey cast iron wheel center. Round tread profile offers a reduced floor contact area, easiness for handling and maneuvering, reducing handling effort and low rolling noise level. They offer a superior service life due to its polyurethane layer larger than conventional wheels. They have an excellent resistance to abrasion, impacts, weathering and chemicals such as greases, oils, salts and solvents. Higher hardness wheel side faces allow for a higher resistance to impacts and a softer center a higher floor friction with a lower handling noise level. They may be employed in a speed up to 20km/h on floors that are not contaminated with grease or slippery liquids.



Swivel Caster	Rigid Caster	Wheel				Axle Type (bearing)				
Reference	Reference	Reference	(mm)	(mm)	(pol)		KG	(mm)	w/o brake (mm)	w/ brake FP (mm)
GKSR 42 ME	FKSR 42 ME	R 42 ME	100	50	1/2"	Ball Bearing	400	143	75	135
GKSR 52 ME	FKSR 52 ME	R52 ME	125				450	165	92	140
GKSR 62 ME	FKSR 62 ME	R62 ME	150				550	190	132	180
GKSR 82 ME	FKSR 82 ME	R82 ME	200				650	241	173	210
GKSR 102 ME	FKSR 102 ME	R102 ME	250				700	290	213	240
GKSR 122 ME	FKSR 122 ME	R122 ME	300				800	343	254	-

Accessories/Brake Options



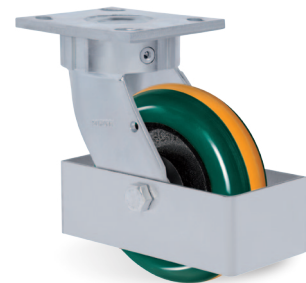
Side Brake - FL



Pedal Brake - FP

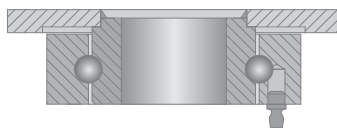


Swivel Lock - AD



Caster Guard - GC

Swivel Sections



Top Plate Options

