



# MPX - Heavy Medium Axial

## F - CAST IRON







Load capacity up to 1400kg

**RIG** Reinforced, made of carbon steel with stamped and machined parts, swivel section with two axial ball bearings. Painted finishing. Bolted wheel axle.



### WHEEL

F - Cast Iron. Hardness: 160 Brinell. (-40°C to + 400°C)  
Produced with grey cast iron, they roll easily offering a great handling effort reduction. They are very resistant withstanding high loads and temperatures. They are not indicated to utilization when noise level and floor maintenance are required.

Swivel Caster	Rigid Caster	Wheel				Axle Type (bearing)				
Reference	Reference	Reference	(mm)	(mm)	(pol)		KG	(mm)	w/o brake (mm)	w/ brake FP (mm)
GMPX 63 FR	FMPX 63 FR	R 63 FR	150	70	3/4"	Roller Bearing	1000	218	115	200
GMPX 63 FE	FMPX 63 FE	R 63 FE				Ball Bearing				
GMPX 83 FR	FMPX 83 FR	R 83 FR	200			Roller Bearing	1200	260	150	230
GMPX 83 FE	FMPX 83 FE	R 83 FE				Ball Bearing				
GMPX 103 FR	FMPX 103 FR	R 103 FR	250			Roller Bearing	1300	320	195	270
GMPX 103 FE	FMPX 103 FE	R 103 FE				Ball Bearing				
GMPX 123 FR	FMPX 123 FR	R 123 FR	300			Roller Bearing	1400	376	240	310
GMPX 123 FE	FMPX 123 FE	R 123 FE				Ball Bearing				

### Accessories



FL - Side Brake



FP - Pedal Brake

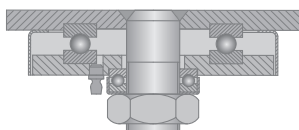


BG - Swivel Lock



GC - Caster Guard

### Swivel Sections



### Top Plate

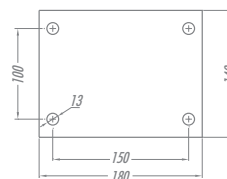


Plate MPX