



# PX - Super Heavy Axial

F - CAST IRON








Load capacity up to 1400kg

**RIG** Reinforced rig, made of carbon steel, swivel section with axial ball bearing and taper roller bearings. Painted finishing Bolted wheel axle.



**WHEEL**

F - Cast Iron. Hardness: 160 Brinell. (-40°C to + 400°C)  
Produced with grey cast iron, they roll easily offering a great handling effort reduction. They are very resistant withstanding high loads and temperatures. They are not indicated to utilization when noise level and floor maintenance are required.

Swivel Caster	Rigid Caster	Wheel				Axle Type (bearing)				
Reference	Reference	Reference	(mm)	(mm)	(pol)		KG	(mm)	w/o brake (mm)	w/ brake FP (mm)
GPX 63 FR	FPX 63 FR	R 63 FR	150	70	3/4"	Roller Bearing	1000	230	130	205
GPX 63 FE	FPX 63 FE	R 63 FE				Ball Bearing				
GPX 83 FR	FPX 83 FR	R 83 FR	200			Roller Bearing	1200	275	170	240
GPX 83 FE	FPX 83 FE	R 83 FE				Ball Bearing				
GPX 103 FR	FPX 103 FR	R 103 FR	250			Roller Bearing	1300	325	195	275
GPX 103 FE	FPX 103 FE	R 103 FE				Ball Bearing				
GPX 123 FR	FPX 123 FR	R 123 FR	300			Roller Bearing	1400	370	230	308
GPX 123 FE	FPX 123 FE	R 123 FE				Ball Bearing				

**Accessories**



FL - Side Brake



FP - Pedal Brake

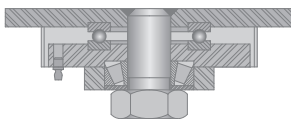


BG - Swivel Lock



GC - Caster Guard

**Swivel Sections**



**Top Plate**

