

# PEX - Heavy Extra Axial

## C - CELERON

Load capacity up to 1700kg








**RIG** Reinforced rig, made of carbon steel, swivel section with axial ball bearing and taper roller bearings. Painted finishing Bolted wheel axle.



### WHEEL

C - Celeron Hardness: 103 Rockwell M. (-30°C to + 120°C)  
Manufactured with a compound obtained from macerated cotton fibers drenched with phenolic resin, molded by heat and pressure. They have excellent mechanical properties, are light and rugged, resistant to deformation under static loads and roll easily. They can be used over a wide temperature range. They are resistant to mild oils, greases and acids in low concentrations. Not recommended for applications in wet environments in contact with alkaline substances. (e.g., caustic soda, chlorine, cleaning products, soap and detergent). Nominal working speed is up to 4km/h.



Swivel Caster	Rigid Caster	Wheel				Axle Type (bearing)				
Reference	Reference	Reference	(mm)	(mm)	(pol)		KG	(mm)	w/o brake (mm)	w/ brake FP (mm)
GPEX 124 CE	FPEX 124 CE	R 124 CE	300	100	1"	Ball Bearing	1700	384	253	335

### Accessories



FL - Side Brake



FP - Pedal Brake

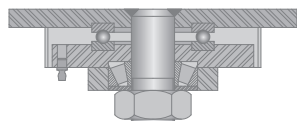


BG - Swivel Lock



GC - Caster Guard

### Swivel Sections



### Top Plate Option

