

CMX - CPX

BS - MOLDED DOUBLE RUBBER

Load capacity up to 2000kg

RIG Reinforced rig with an anti-shock spring system, manufactured in thick carbon steel with stamped and machined parts, swivel section with axial ball bearing and tapered roller bearing. Painted finishing. Bolted wheel axle.

*GCMX 62 has swivel section with two axial ball bearings.



WHEEL

BS - Double-Layered Molded Rubber. Hardness: 80 Shore A. (-20°C to +70°C)
Produced with molded double-layered vulcanized rubber tread over a grey cast iron wheel center. Ideal for external floor applications, offer a great shock and vibration absorption, high resistance to abrasion and longer service life due to their thicker rubber layer. Resistant to chemicals. They can be used at a speed of up to 20km/h when mounted with ball bearings.



Wheel Options

BS Black
80 Shore A










BS Gray
65 Shore A



BS Blue
65 Shore A



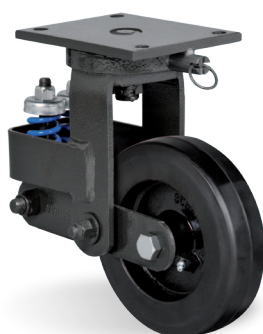
Swivel Caster	Rigid Caster	Wheel				Axle Type (bearing)				
Reference	Reference	Reference	(mm)	(mm)	(pol)		options spring load	(mm)	w/o brake (mm)	w/ brake FP (mm)
GCMX 62 BSE	FCMX 62 BSE	R 62 BSE	150	50	1/2"	Ball Bearing	80/130/180	220	130	180
GCMX 82 BSE	FCMX 82 BSE	R 82 BSE	200		5/8"		80/130/180/250	292	180	220
GCMX 102 BSE	FCMX 102 BSE	R 102 BSE	250					340	205	230
GCPX 83 BSE	FCPX 83 BSE	R 83 BSE	200	70	3/4"		180/250/500	325	180	250
GCPX 103 BSE	FCPX 103 BSE	R 103 BSE	250					350	205	275
GCPX 123 BSE	FCPX 123 BSE	R 123 BSE	300					405	230	300
GCPX 124 BSE	FCPX 124 BSE	R 124 BSE	300	100			750/1000	390	258	340

Example - Caster GCMX 82 BE Spring 180KG

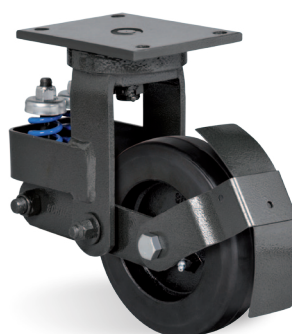
Accessories/Brake Options



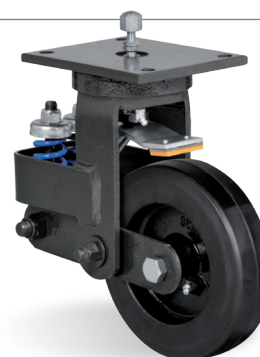
FP - Pedal Brake



BG - Swivel Lock



PA - Fender



AH - Central Brake

Top Plate Options

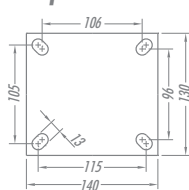


Plate 62

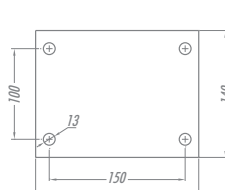


Plate 82 e 102

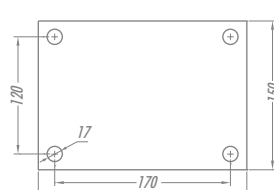


Plate 83 a 123

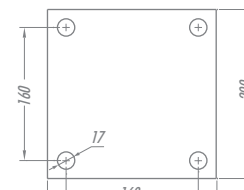
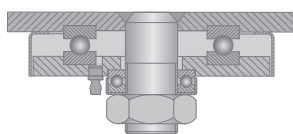
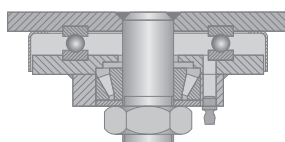


Plate 124

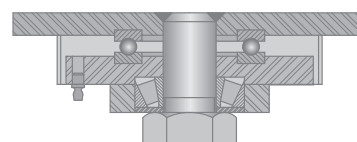
Swivel Sections



CMX 62



CMX 82 e 102



CPX