

PCX - Pneumatic Axial

PNEUMATIC PP








Load capacity up to 220kg

RIG Reinforced rig, made of carbon steel with stamped and machined parts, swivel section with two axial ball bearings. Painted finishing. Bolted wheel axle.



WHEEL

PP - Pneumatic - Nylon Wheel Center. (-20°C to + 50°C)
Manufactured with tire and tube and nylon injected wheel center. Indicated for applications in irregular floors where handling easiness, and impact and vibration damping is required. They offer easy maintenance, and their components can be supplied separately. Nominal working speed is up to 4km/h.

Swivel Caster	Rigid Caster	Wheel				Axle Type (bearing)				
Reference	Reference	Reference	(mm)	(mm)	(pol)		KG	(mm)	w/o brake FP (mm)	w/ brake FP (mm)
GPCX 3258 PPN	FPCX 3258 PPN	R 3258 PPN	355	80	3/4"	Nylon Socket	200	435	295	295
GPCX 3258 PPR	FPCX 3258 PPR	R 3258 PPR				Roller Bearing				
GPCX 3258 PPE	FPCX 3258 PPE	R 3258 PPE				Ball Bearing				
GPCX 3508 PPN	FPCX 3508 PPN	R 3508 PPN	385	95	3/4"	Nylon Socket	220	450	310	310
GPCX 3508 PPR	FPCX 3508 PPR	R 3508 PPR				Roller Bearing				
GPCX 3508 PPE	FPCX 3508 PCE	R 3508 PPE				Ball Bearing				

Swivel Sections

Top Plate

Brake Option

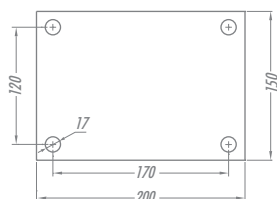
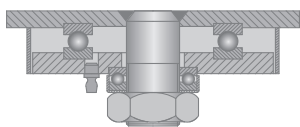


Plate PCX



FP - Pedal Brake