



PCX - Pneumatic Axial

PNEUMATIC PC

Load capacity up to 300kg

RIG








Reinforced rig, made of carbon steel with stamped and machined parts, swivel section with two axial ball bearings. Painted finishing. Bolted wheel axle.



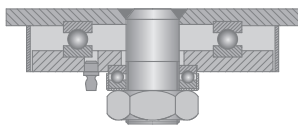
WHEEL

PC - Pneumatic - Stamped Plate Wheel Center (- 20°C to + 50°C)

Manufactured with tire and tube, with painted stamped carbon steel plates. Indicated for applications in irregular floors where handling easiness, and impact and vibration damping is required. They offer an easy maintenance, and their components can be supplied separately. Nominal working speed is up to 4 km/h.

Swivel Caster	Rigid Caster	Wheel				Axle Type (bearing)				
Reference	Reference	Reference	(mm)	(mm)	(pol)		KG	(mm)	w/o brake FP (mm)	w/ brake FP (mm)
GPCX 3258 PCR	FPCX 3258 PCR	R 3258 PCR	355	80		Roller Bearing	200	435	295	295
GPCX 3258 PCE	FPCX 3258 PCE	R 3258 PCE				Ball Bearing				
GPCX 3508 PCR	FPCX 3508 PCR	R 3508 PCR	385	95	3/4"	Roller Bearing	220	450	310	310
GPCX 3508 PCE	FPCX 3508 PCE	R 3508 PCE				Ball Bearing				
GPCX 4008 PCR	FPCX 4008 PCR	R 4008 PCR	400	105		Roller Bearing	300	480	330	330
GPCX 4008 PCE	FPCX 4008 PCE	R 4008 PCE				Ball Bearing				

Swivel Sections



Top Plate

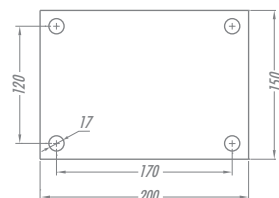


Plate PCX

Brake Option



FP - Pedal Brake