

PMX - Solid Tires Axial





PMR - SOLID TIRES

Load capacity up to 500kg

RIG Reinforced rig, made of carbon steel with stamped and machined parts, swivel section with two axial ball bearings. Painted finishing. Bolted wheel axle.



WHEEL PMX - Solid Rubber. Hardness: 80 Shore A. (-20°C to + 70°C)
Produced with black solid rubber rim and stamped carbon steel plates for the flanges (wheel center). They do not require maintenance, they do not go flat, easily rolling under obstacles and are indicated for use on irregular floors. Flanges are secured by screws, enabling the mounting and replacement of their components that may be supplied separately.

Swivel Caster	Rigid Caster	Wheel				Axle Type (bearing)				
Reference	Reference	Reference	(mm)	(mm)	(pol)		KG	(mm)	w/o brake (mm)	w/ brake FP (mm)
GPMX 2258 PMR	FPMX 2258 PMR	R 2258 PMR	300	52	3/4"	Roller Bearing	200	405	270	270
GPMX 2258 PME	FPMX 2258 PME	R 2258 PME				Ball Bearing				
GPMX 12300 PMR	FPMX 12300 PMR	R 12300 PMR	310	68		Roller Bearing	350	410	275	275
GPMX 12300 PME	FPMX 12300 PME	R 12300 PME				Ball Bearing				
GPMX 3308 PMR	FPMX 3308 PMR	R 3308 PMR	330	77		Roller Bearing	400	420	285	285
GPMX 3308 PME	FPMX 3308 PME	R 3308 PME				Ball Bearing				
GPMX 15300 PMR	FPMX 15300 PMR	R 15300 PMR	385	85		Roller Bearing	450	448	310	310
GPMX 15300 PME	FPMX 15300 PME	R 15300 PME				Ball Bearing				
GPMX 16400 PMR	FPMX 16400 PMR	R 16400 PMR	400	105		Roller Bearing	500	480	330	330
GPMX 16400 PME	FPMX 16400 PME	R 16400 PME				Ball Bearing				

Swivel Sections

Top Plate

Brake Option

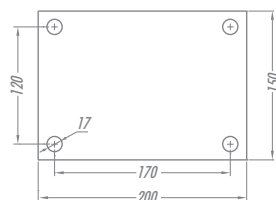
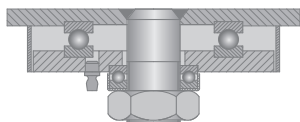


Plate PMX



FP - Pedal Brake