



# YPEX

## P - MOLDED POLYURETHANE







Load capacity up to 3800kg

**RIG** Reinforced rig, made of carbon steel, swivel section with axial ball bearing and taper roller bearings. Painted finishing Bolted wheel axle.



### WHEEL

P - Moulded Polyurethane. Hardness: 90 Shore A. (-40°C to + 80°C)  
Produced with a molded polyurethane tread and grey cast iron wheel center. Ideal for applications on various surface and environment types. They withstand high loads, protect the floor, require less effort to handle, produce low noise level during handling, and have an excellent service life. They have great resistance to abrasion, impacts, weathering and chemicals such as greases, oils, salts and solvents. They can be used at a speed of up to 20km/h when mounted with ball bearings.

Swivel Caster	Rigid Caster	Wheel				Axle Type (bearing)			
Reference	Reference	Reference	(mm)	(mm)	(pol)		KG	(mm)	(mm)
YGPEX 63 PE	YFPEX 63 PE	R 63 PE	150	151	25	Ball Bearing	2000	240	135
YGPEX 83 PE	YFPEX 83 PE	R 83 PE	200				2400	290	170
YGPEX 103 PE	YFPEX 103 PE	R 103 PE	250				2600	348	210
YGPEX 123 PE	YFPEX 123 PE	R 123 PE	300				2800	398	255
YGPEX 64 PE	YFPEX 64 PE	R 64 PE	150	213	30		2400	245	140
YGPEX 84 PE	YFPEX 84 PE	R 84 PE	200				2800	300	180
YGPEX 104 PE	YFPEX 104 PE	R 104 PE	250				3600	365	230
YGPEX 124 PE	YFPEX 124 PE	R 124 PE	300				3800	390	255

### Accessories/Brake Options

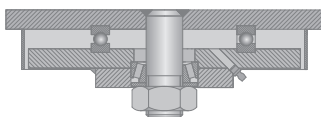


FL - Side Brake



BG - Swivel Lock

### Swivel Sections



### Top Plate Options

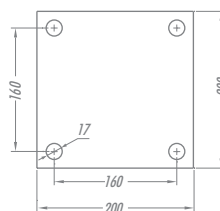


Plate 63 a 123

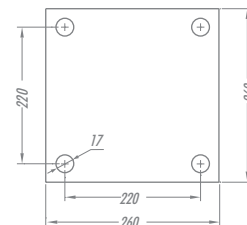


Plate 64 a 124