

YPEX

B - MOLDED RUBBER







Load capacity up to 2000kg

RIG Reinforced rig, made of carbon steel, swivel section with axial ball bearing and taper roller bearings. Painted finishing Bolted wheel axle.



WHEEL

B - Molded Rubber. Hardness: 80 Shore A. (-20°C to + 70°C)
Produced with molded vulcanized rubber tread over a grey cast iron wheel center. They roll softly with a low noise level, absorb shocks and vibrations. They are resistant to abrasion and chemicals. They can be used at a speed of up to 20km/h when mounted with ball bearings.

Swivel Caster	Rigid Caster	Wheel	 (mm)	 (mm)	 (pol)	Axle Type (bearing)	 KG	 (mm)	 (mm)
Reference	Reference	Reference	(mm)	(mm)	(pol)			(mm)	(mm)
YGPEX 63 BE	YFPEX 63 BE	R 63 BE	150	151	25	Ball Bearing	800	240	135
YGPEX 83 BE	YFPEX 83 BE	R 83 BE	200				1000	290	170
YGPEX 103 BE	YFPEX 103 BE	R 103 BE	250				1200	348	210
YGPEX 123 BE	YFPEX 123 BE	R 123 BE	300				1500	398	255
YGPEX 64 BE	YFPEX 64 BE	R 64 BE	150	213	30		1000	245	140
YGPEX 84 BE	YFPEX 84 BE	R 84 BE	200				1300	300	180
YGPEX 104 BE	YFPEX 104 BE	R 104 BE	250				1600	365	230
YGPEX 124 BE	YFPEX 124 BE	R 124 BE	300				2000	390	255

Accessories/Brake Options

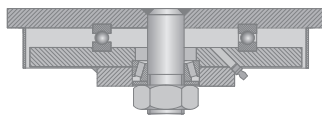


FL - Side Brake



BG - Swivel Lock

Swivel Sections



Top Plate Options

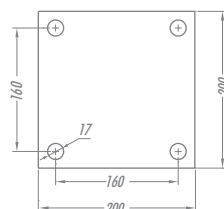


Plate 63 a 123

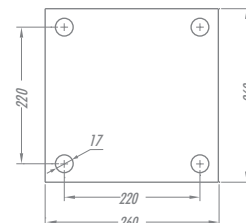


Plate 64 a 124