

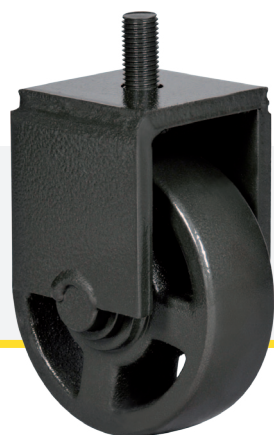
# SPECIAL SOLUTIONS



*4" support caster  
GCM 42 PER - PL*



*2" caster for cable  
carrier chains  
GMS 211 FBB*



*5" caster with cast  
iron wheel for power  
transformers  
FP 514 F*



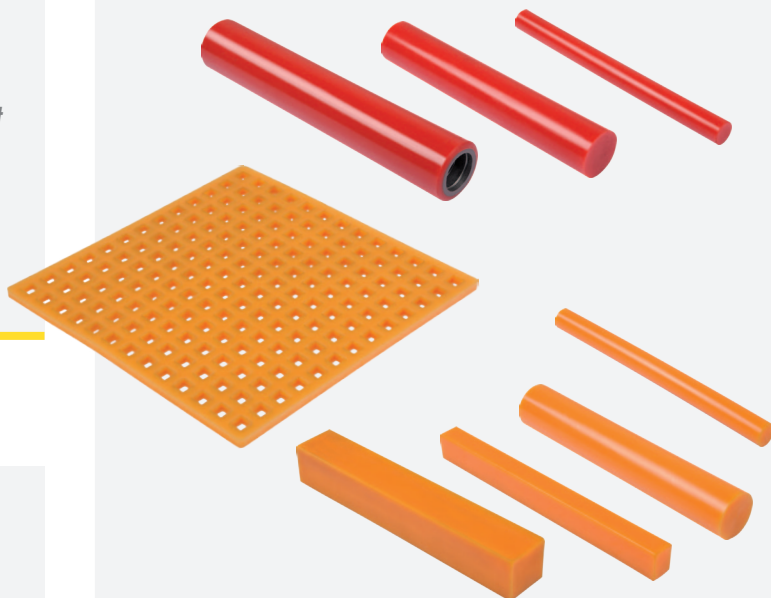
*Injected 3" caster  
GNBEL 310 NP AF15*



*3" caster with reinforced rig  
for application in equipment  
up to 1200 kg with overall  
height constraints  
GPKX 316 NTE*



*Caster whit  
wheel 16"  
CPX 165 BSE*



## *Polyurethane technical parts*

*Bars, screens, rolls, etc. applied for manufacturing of polyurethane springs, conveyors and sieves for the mining industry*



*6" caster with tubular stem for small scaffolds  
GMETU 614 BPN FL*



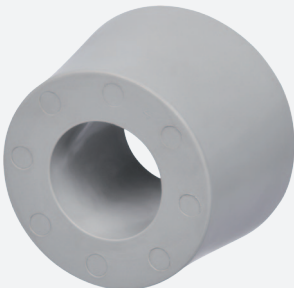
*8" wheel. Tread has a thick PVC layer for warehouse carts  
R 82 BPE – Offset Hub*



*HAIR REMOVAL PLATE (USED IN SWINE)  
Thermoplastic Elastomer Plate having great mechanical resistance used for hair removing equipment in the food industry*



*SIGNALING BASE  
Support base for signaling cones on streets and roads*



*RHODE CONE  
Bore reduction accessory in takeup equipment, solution to replace wooden parts*



*TRACTION WHEELS  
Wheel R REM 343.140 PAC - PL  
Wheel R REM 310.102 PAC - PL*