

EVOLUTION

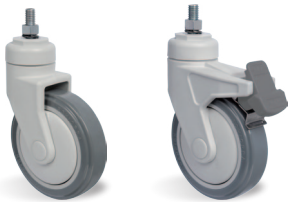
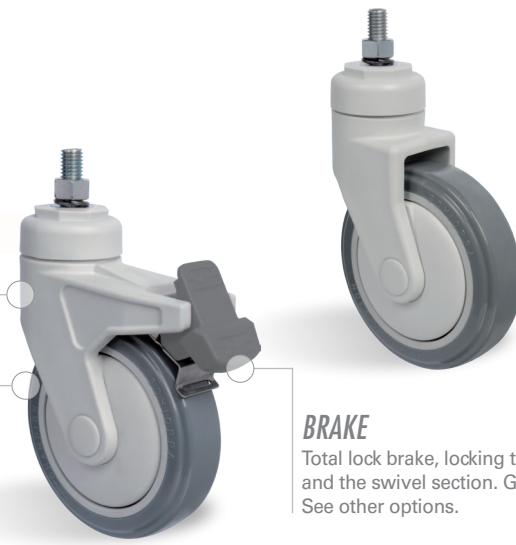


Load capacity up to 100kg

RIG Made of natural nylon 6.0 with double ball raceway.

WHEEL BP - Thermoplastic Compound with PVC. Hardness: 80 Shore A. (-10°C to + 50°C)
Produced with recyclable thermoplastic compound with PVC tread and polypropylene copolymer wheel center. They offer a soft and quiet rolling, great floor protection, good chemical, wear and impact resistance, resulting in an excellent cost-benefit ratio. Nominal working speed is up to 4km/h.

BRAKE
Total lock brake, locking the wheel and the swivel section. Gray Color. See other options.



Wheel Options

BP

PVC
80 Shore A



SP

Soft Rubber
65 Shore A



TB

Thermoplastic
Rubber
80 Shore A



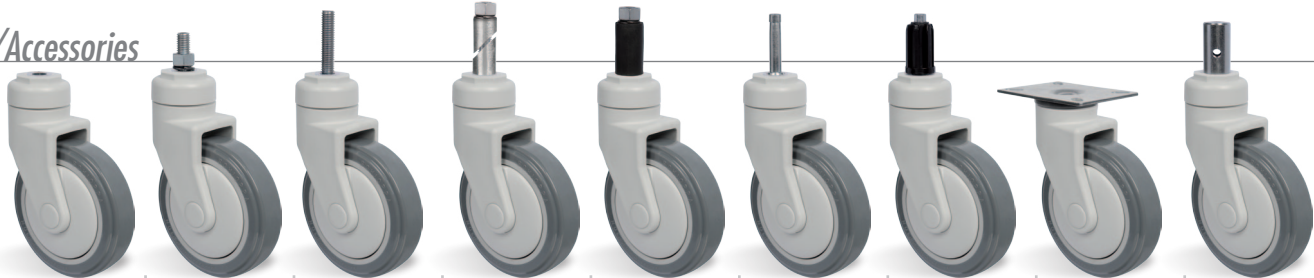
UP

Polyurethane
90 Shore A



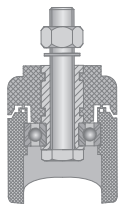
Swivel Caster	Swivel Caster with Brake				Axle Type (bearing)				
Reference	Reference	(mm)	(mm)	(pol)		KG	(mm)	w/o brake (mm)	w/ brake FP (mm)
GNRE 412 BPE	GNRE 412 BPE FP	100	32	5/16"	Ball Bearing	100	156	88	115
GNRE 512 BPE	GNRE 512 BPE FP	125					181	102	125
GNRE 612 BPE	GNRE 612 BPE FP	150					209	120	125
GNRE 812 BPE	GNRE 812 BPE FP	200					251	167	167

Fittings/Accessories

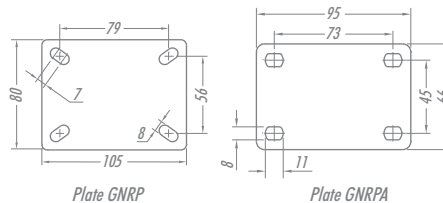


Reference	Axle hole 13mm	Threaded Stem 1/2" X 25mm	Threaded Stem 1/2" X 64mm	Aluminum Expander Fitting	Rubber Expander Fitting	Stem 7/16" X 50mm	Nylon Socket Fitting	Fixação por Top Plate	Stem Side Fitting
GNRES	GNRE	GNREX	See table below	See table below	GNREL	See table below	Ver Opções Abaixo	See table below	

Swivel Sections



Top Plate Options



Brake Option



FP - Pedal Brake

NYLON SOCKET FITTING		RUBBER EXPANDER FITTING		ALUMINUM EXPANDER FITTING		STEM SIDE FITTING	
SIZE (mm)	REFERENCE	REFERENCE	SIZE (mm)	REFERENCE	SIZE (mm)	SIZE (mm)	REFERENCE
Ø38	ES1	EX1	18-21	EA2	21-27	19 x 45	GNREL1
Ø30	ES2	EX2	21-24			21,5 x 45	GNREL2
Ø25	ES3	EX3	25-28	EA4	27-33	22 x 45	GNREL3
40x40	ES4	EX4	27-30			25 x 45	GNREL4
		EX5	37-40			28 x 45	GNREL5